



# **DIGITAL WALLPAPER SOLUTIONS**

# HIGH DEFINITION

Digital Wallpaper series is INFiLED's flagship fine pixel pitch, ultra-thin, high resolution digital LED display.

The all-in-one design is the perfect solution for any installation requiring ultra-high definition. With a panel ratio of 16:9 and pixel pitch ranging from 0.9mm to 3.1mm, configurations of 2K, 4k, 8K resolution displays can be easily achieved.

With an ultra-thin edge thickness of only 29.5mm and an intuitive slim line mounting system, Digital Wallpaper saves space for demanding environments.

Digital Wallpaper features front service modules for efficient hassle-free maintenance, resulting in minimal screen downtime. The innovation service tool ensures the panel is protected during maintenance.



High Definition



Thin



Light Weight



Low Power

# 01

## HIGH DEFINITION

Screen Size			Pixel Pitch						
QTY	Size	Inch	0.9COB	1.25	1.5m4	1.8	2.3	2.5	3.1
3x3	1.8×1.01m	81	2K						
4x4	2.4×1.35m	110		2K					
5x5	3×1.68m	135			2K				
6x6	3.6×2.02m	163	4K			2K			
7x7	4.2×2.36m	190					2K (Customized)		
8x8	4.8×2.7m	220		4K				2K	
10x10	6×3.37m	270			4K				2K
12x12	7.2×4.05m	324	8K			4K			

- ◆ Cutting edge technology IMD&COB are applied.  
The sophisticated fine pitch LEDs are more durable and robust.
- ◆ A panel ratio of 16:9 combined with fine pixel pitch allow the setup of 2K, 4K, 8K resolution displays achievable.

### ASPECT RATIO



2K 1920×1080

4K 3840×2160

8K 7680×4320

16:9ASPECT RATIO

# 02

## ULTRA-THIN



- ◆ Digital Wallpaper features an edge thickness of 29.5mm, and the combined thickness is only 37mm when mounted with the slim line floating bracket.



## INSTALL SOLUTION

# 03

- ◆ Slim-line floating mounting brackets allow quick and easy installation and results in a flat seamless finish.



# 04

## EASY MAINTENANCE



- ◆ LED modules front service for easy maintenance.
- ◆ The innovative vacuum suction tool prevents damage to the LEDs during maintenance.

## ASYNCHRONIZATION

# 05



USB



- ◆ Digital Wallpaper can use traditional control solutions or local inputs and media players can be integrated into the unit to make it a complete stand-alone screen.

06

## CREATIVE CORNER

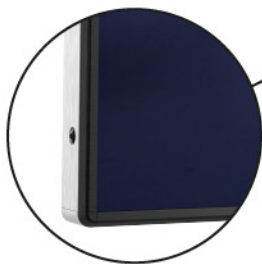
- ◆ Corner screen building options for creative applications.



## PORTABILITY

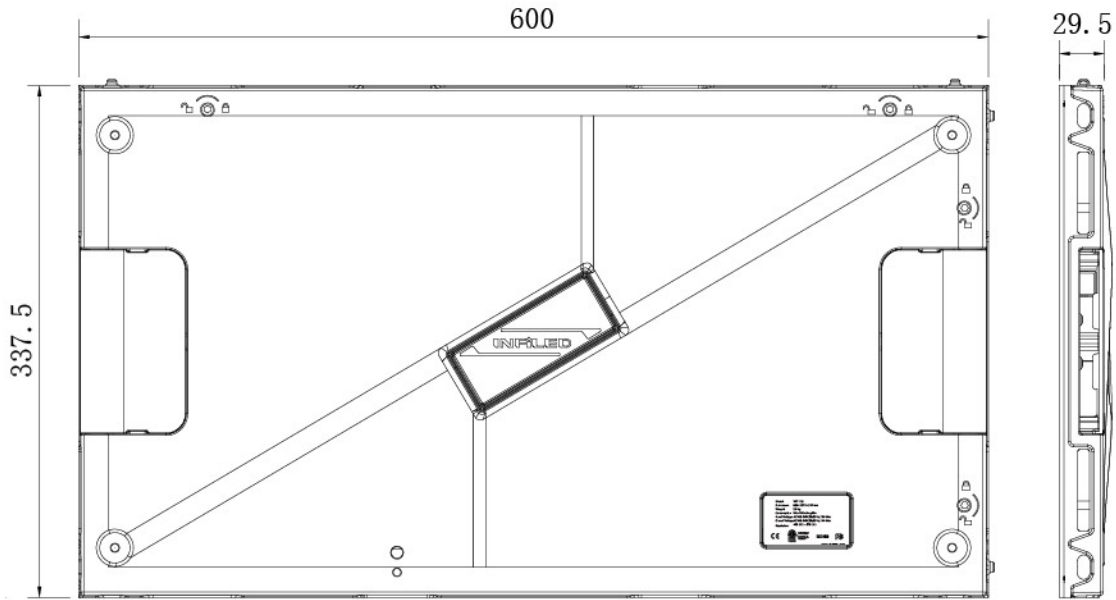
07

- ◆ Digital Wallpaper can also be mounted on a trolley to transform into high definition mobile digi-board.
- ◆ With safety anti-collision rim, the LEDs can be well protected.



For reference only.

## SPECIFICATIONS



Model Number	IL-FISS-IRWP0.9COB	IL-FISS-IRWP1.25	IL-FISS-IRWP1.5
Pixel Pitch	0.9375mm	1.25mm	1.5625mm
Physical Density	1,137,777pixels/m <sup>2</sup>	640,000pixels/m <sup>2</sup>	409,600pixels/m <sup>2</sup>
LED Arrangement	COB	3 IN 1 SMD	3 IN 1 SMD
Module Resolution	320×360pixels	240×135pixels	192×108pixels
Module Dimensions	300×337.5mm(11.81×13.29in)	300×168.75mm(11.81×6.64in)	300×168.75mm(11.81×6.64in)
Cabinet Resolution	640×360pixels	480×270pixels	384×216pixels
Cabinet Dimensions	600×337.5×38.5mm (23.62×13.29×1.52in)	600×337.5×29.5mm (23.62×13.29×1.16in)	600×337.5×29.5mm (23.62×13.29×1.16in)
Cabinet Weight	6.2kg(13.67lb)	5.2kg(11.46lb)	5.2kg(11.46lb)
Brightness	1,000nits	700~800nits	600~800nits
Max Power Consumption	180w/panel	180w/panel	180w/panel
Ave Power Consumption	60w/panel	60w/panel	60w/panel
Viewing Angle	160°/160°	160°/160°	160°/160°
Operating Power Source	100-240V AC 50-60Hz	100-240V AC 50-60Hz	100-240V AC 50-60Hz
Operating Temperature	-10°C~+45°C	-10°C~+45°C	-10°C~+45°C
Refresh Rate	≤3,840Hz	≤3,840Hz	≤3,840Hz
IP Rating	IP30	IP30	IP30
Signal Input Source	Composite, S-Video, Component, HDMI, SDI, HD SDI, VGA, DVI	Composite, S-Video, Component, HDMI, SDI, HD SDI, VGA, DVI	Composite, S-Video, Component, HDMI, SDI, HD SDI, VGA, DVI
Verification	/	CE, ETL, FCC, RoHS	CE, ETL, FCC, RoHS

## SPECIFICATIONS

Model Number	IL-FISS-IRWP1.5m4	IL-FISS-IRWP1.8	IL-FISS-IRWP2.3
Pixel Pitch	1.5625mm	1.875mm	2.34375mm
Physical Density	409,600pixels/m <sup>2</sup>	284,444pixels/m <sup>2</sup>	182,044pixels/m <sup>2</sup>
LED Arrangement	4 IN 1 IMD	3 IN 1 SMD	3 IN 1 SMD
Module Resolution	192×108pixels	160×90pixels	128×72pixels
Module Dimensions	300×168.75mm(11.81×6.64in)	300×168.75mm(11.81×6.64in)	300×168.75mm(11.81×6.64in)
Cabinet Resolution	384×216pixels	320×180pixels	256×144pixels
Cabinet Dimensions	600×337.5×29.5mm (23.62×13.29×1.16in)	600×337.5×29.5mm (23.62×13.29×1.16in)	600×337.5×29.5mm (23.62×13.29×1.16in)
Cabinet Weight	5.2kg(11.46lb)	5.2kg(11.46lb)	5.2kg(11.46lb)
Brightness	800nits	600~800nits	1,000~1,300nits
Max Power Consumption	180w/panel	180w/panel	180w/panel
Ave Power Consumption	60w/panel	60w/panel	60w/panel
Viewing Angle	160°/160°	160°/160°	160°/160°
Operating Power Source	100-240V AC 50-60Hz	100-240V AC 50-60Hz	100-240V AC 50-60Hz
Operating Temperature	-10°C~+45°C	-10°C~+45°C	-10°C~+45°C
Refresh Rate	≤3,840Hz	≤3,840Hz	≤3,840Hz
IP Rating	IP30	IP30	IP30
Signal Input Source	Composite, S-Video, Component, HDMI, SDI, HD SDI, VGA, DVI	Composite, S-Video, Component, HDMI, SDI, HD SDI, VGA, DVI	Composite, S-Video, Component, HDMI, SDI, HD SDI, VGA, DVI
Verification	CE, ETL, FCC, RoHS	CE, ETL, FCC, RoHS	CE, ETL, FCC, RoHS

Model Number	IL-FISS-IRWP2.5	IL-FISS-IRWP3.1
Pixel Pitch	2.5mm	3.125mm
Physical Density	160,000pixels/m <sup>2</sup>	102,400pixels/m <sup>2</sup>
LED Arrangement	3 IN 1 SMD	3 IN 1 SMD
Module Resolution	120×135pixels	96×54pixels
Module Dimensions	300×337.5mm(11.81×13.29in)	300×168.75mm(11.81×6.64in)
Cabinet Resolution	240×135pixels	192×108pixels
Cabinet Dimensions	600×337.5×29.5mm (23.62×13.29×1.16in)	600×337.5×29.5mm (23.62×13.29×1.16in)
Cabinet Weight	5.2kg(11.46lb)	5.2kg(11.46lb)
Brightness	1,200~1,500nits	1,200~1,500nits
Max Power Consumption	180w/panel	180w/panel
Ave Power Consumption	60w/panel	60w/panel
Viewing Angle	160°/160°	160°/160°
Operating Power Source	100-240V AC 50-60Hz	100-240V AC 50-60Hz
Operating Temperature	-10°C~+45°C	-10°C~+45°C
Refresh Rate	≤3,840Hz	≤3,840Hz
IP Rating	IP30	IP30
Signal Input Source	Composite, S-Video, Component, HDMI, SDI, HD SDI, VGA, DVI	Composite, S-Video, Component, HDMI, SDI, HD SDI, VGA, DVI
Verification	CE, ETL, FCC, RoHS	CE, ETL, FCC, RoHS